

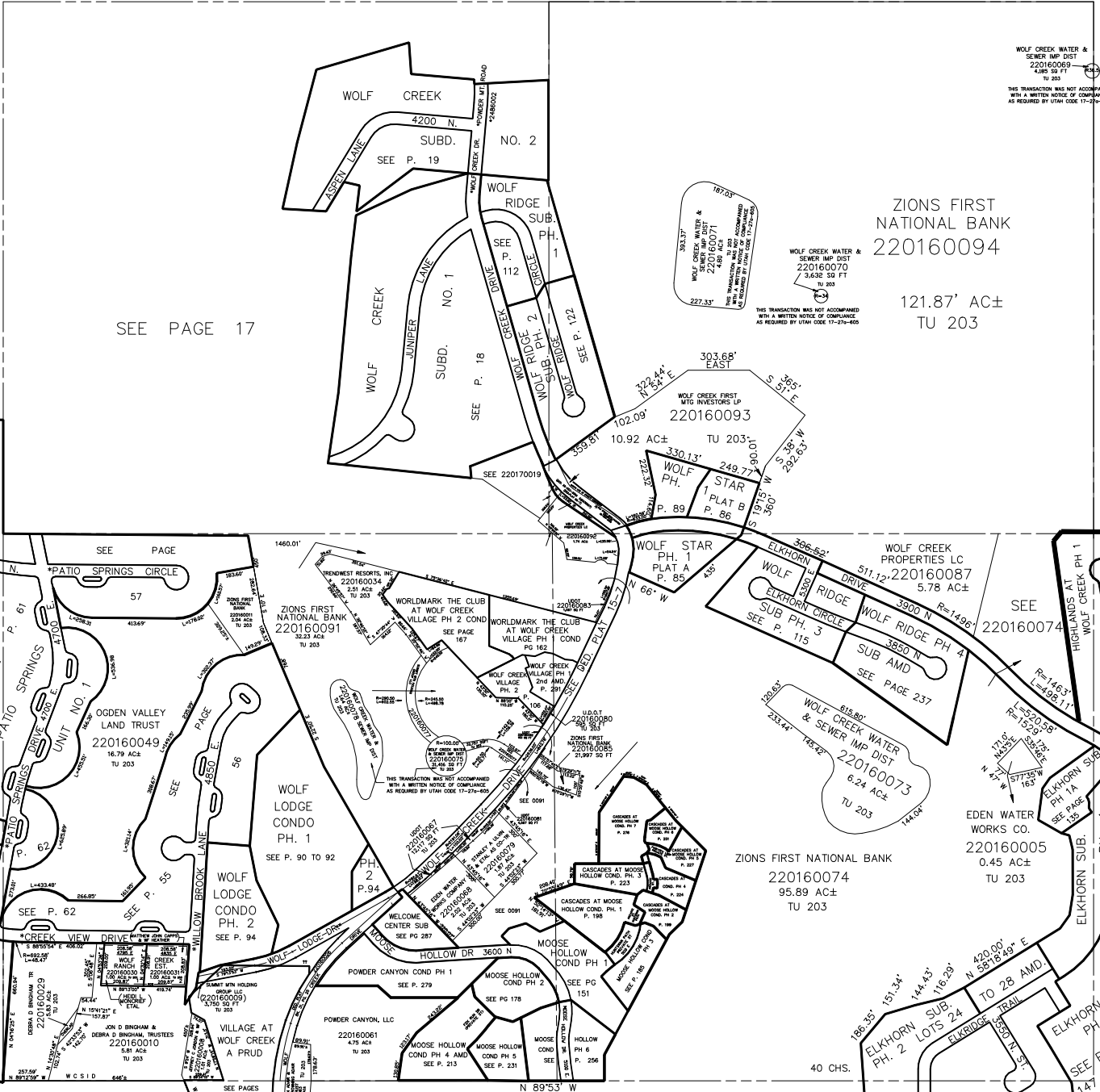
SECTION 22, T.7N., R.1E., S.L.B. & M.

IN WEBER COUNTY

SCALE 1" = 400'

TAXING UNIT: 203

SEE PAGE 6



SEE PAGE 15

SEE PAGE 17

SEE PAGE 58

SEE PAGE 59

SEE PAGE 60

SEE PAGE 61

SEE PAGE 62

SEE PAGE 63

SEE PAGE 64

SEE PAGE 65

SEE PAGE 66

SEE PAGE 67

SEE PAGE 68

SEE PAGE 69

SEE PAGE 70

SEE PAGE 71

SEE PAGE 72

SEE PAGE 73

SEE PAGE 74

SEE PAGE 75

SEE PAGE 76

SEE PAGE 77

SEE PAGE 78

SEE PAGE 79

SEE PAGE 80

SEE PAGE 81

SEE PAGE 82

SEE PAGE 83

SEE PAGE 84

SEE PAGE 85

SEE PAGE 86

SEE PAGE 87

SEE PAGE 88

SEE PAGE 89

SEE PAGE 90

SEE PAGE 91

SEE PAGE 92

SEE PAGE 93

\* STREET NAME CHANGE  
19-JAN-95 1744-1014  
E #1329313

\*\* STREET NAME CHANGE  
ORDINANCE NO 2009-08  
E #2396736

SEE PAGE 21

SEE PAGE 20

SEE PAGE 129

SEE PAGES 147 & 148